

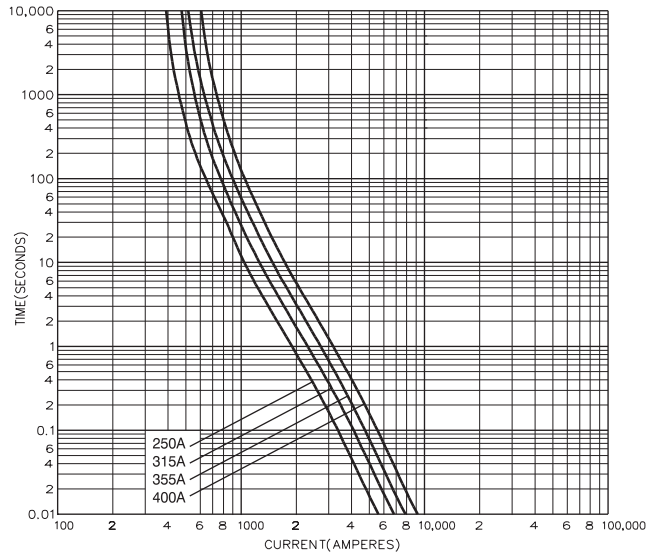
BS88, IEC269 Industrial HRC Fuse Links

Centre Bolted Tags 415V and 550V ac 250 - 400 Amps

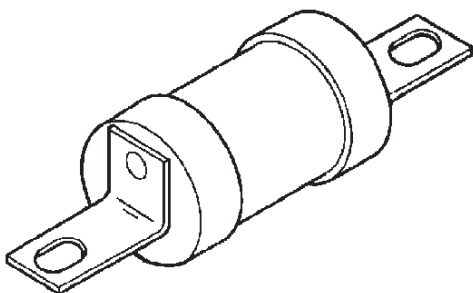
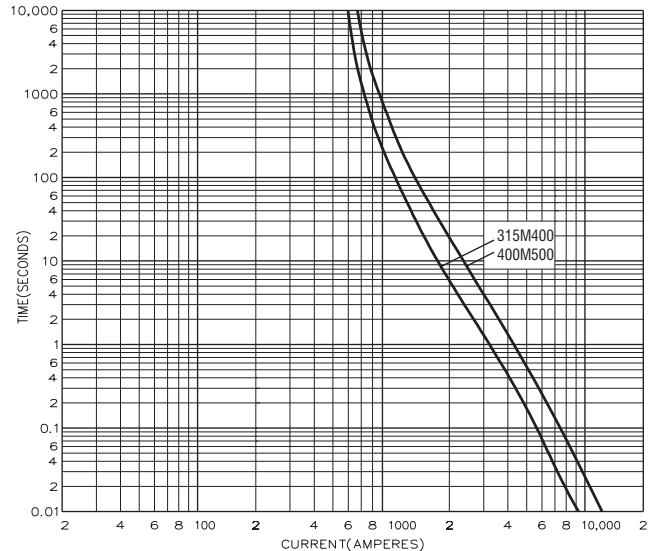
ED

Time-Current Characteristic Curves

Non Motor Rated

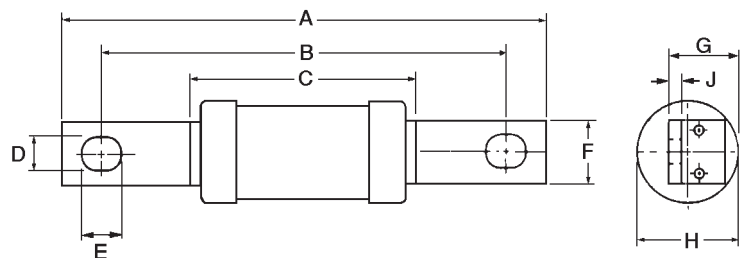


Motor Rated



Centre Bolted Tag

Dimensional Data



Catalog' Number	I ² t (Amps ² Seconds)			Nom. Watts Loss	Rated Voltage	Dimensions (mm)													
	Amp Ratings	Pre-Arcing	Total at 415V			A	B	C	D	E	F	G	H	J					
ED250	250	200,000	480,000	18	415 ac	136.0	111.0	55.0	0.35	12.5	19.0	22.5	31.0	3.2					
ED315	315	265,000	635,000	22				50.0			25.4	31.0	38.0	4.7					
ED315M400	315M400	475,000	1,150,000	15				114.0			75.0	59.0	31.0	38.0	4.7				
ED355	355	360,000	865,000	24				114.0			75.0					59.0	31.0	38.0	4.7
ED400	400	475,000	1,150,000	29															
ED400M500	400M500	1,200,000	2,700,000	24															

Packaging - 1 per carton

This bulletin is intended to clearly present comprehensive product data and provide technical information that will help the end user with design applications. Bussmann reserves the right, without notice, to change design or construction of any products and to discontinue or limit distribution of any products. Bussmann also reserves the right to change or update, without notice, any technical information contained in this bulletin. Once a product has been selected, it should be tested by the user in all possible applications.

Bussmann Division
Cooper (U.K.) Ltd
 Burton-on-the-Wolds
 Leicestershire, LE12 5TH
 United Kingdom
 Tel: (44) (0)1509 88 27 37
 Fax: (44) (0)1509 88 27 86

Head Office
 St. Louis, MO, U.S.A. Tel: (314) 527-3877 Fax: (800) 544-2570 International Fax: (314) 527-1445



Bussmann Information Fax (00 1) 314 527 1450
 Bussmann WEB site - <http://www.bussmann.com>