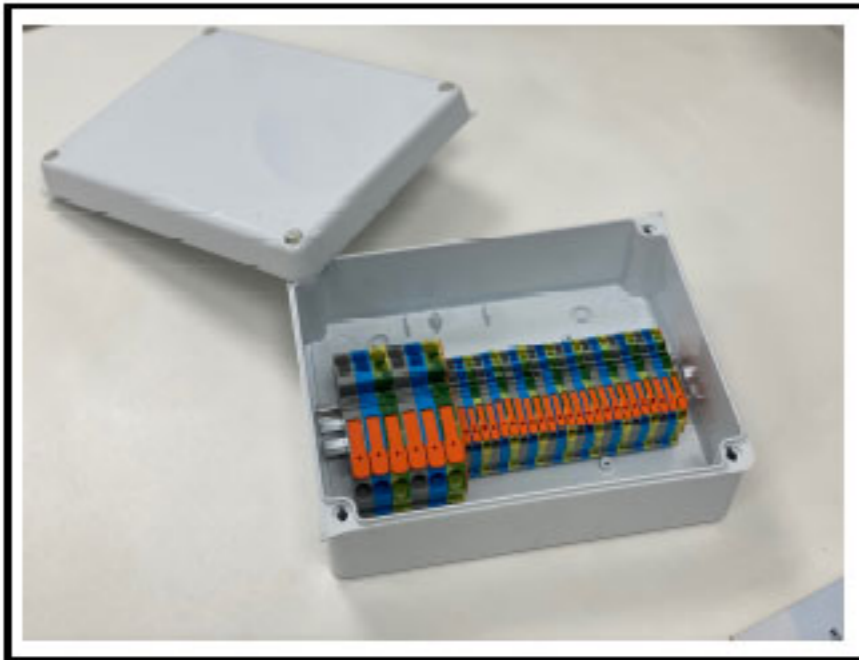


WIB 4 Consumer Unit Reclocation Kit

Surface Sealed Box - White



Products may differ in size, colour and appearance to those shown. If you require further information or customisation, please contact us directly.



Material	Thermoplastic
Protection class	IP65
Temp. range min	-25 °C
Temp. range max	85 °C
Glow wire test	650 °C
Impact resistance	IK07
External dimensions LxWxH	230x180x88mm
Type	WIB 4 CUR
Product Color	RAL 7035
Order no. UK	886CUR
Packing unit	1

Description:

1/4 turn fast screw system 1 screw attached to lid Tamper-proof seal smooth sides

Includes the following DIN Rail Mounted WAGO Top Job Terminals

2102-1201 - Suitable up to 4mm 32a (grey)

2102-1204 - Suitable up to 4mm 32a (blue)

2102-1207 - Suitable up to 4mm (green/yellow)

2110-1201 - Suitable up to 16mm 74a (grey)

2110-1204 - Suitable up to 16mm 74a (blue)

2110-1207 - Suitable up to 16mm (green/yellow)

Extras = 2102-1292 Orange end plate & 2110-1292 Orange end plate.